



Manchester Music Hall Tech Sheet

899 Manchester Street

Lexington, KY 40508

Manchester Music Hall Tech Info

Power

100 - amp three-phase connection on camloc up stage right

8 - 20-amp AC Edison quads built into stage deck

FOH

DigiCo SD9

2 - DigiCo D2 Stage rack (shared with MON for a total of 98x32 I/O)

3 - (per side) db Technologies T12 line array elements (flown) 1 (per side) db Technologies T8 line array element (flown)

2 - (per side) db Technologies S-30 subwoofer
(groundstacked)

1 - db Technologies K5 center fill (flown)

1 - (per side) db Technologies T8 line array element out fill
(flown)

1 - Dolby Lake DLP 8d8 8ch Analog /AES

1 - Lenovo X61 Tablet (Win 7)

Mix position in rolling booth approximately 50' from stage (3/4 of house)

MON

DigiCo SD9

2 - DigiCo D2 Stage rack (Shared with FOH for a total of 98x32 I/O)

8 - EV PMX 12MP active
monitors

6 - JBL SRX815p active monitors

1 - QSC KW181 active subwoofer

Mics/Stands

K&M Microphone stands (various tall and short booms on tripod)

2 - round base straight microphone stands

2 - Z bars

2 - Shure ULXD Wireless mic w/sm58 Capsule

8 - Shure SM58

8 - Shure SM57

1 - Shure Beta52

3 - Shure SM81

7 - Sennheiser e604

3 - Sennheiser e609

1 - CAD GXL1200BP

6 - Whirlwind IMP2 direct

boxes Whirlwind microphone

cables Whirlwind drop snakes

Lighting

Hog 4 PC w/ Lenovo Thinkpad tablet (win10)

4 - Scorpion Dual RGB Laser

5 - Chauvet Intimidator Spot 355z moving head fixtures

8 - Techni-Lux Vector LED 7 moving head fixtures

8 - Chauvet VariWhite LED par front wash

2 - RogueR1XSpot 170W Moving-headspot

2 - IntSpot475Z 250W LED Moving-head Spot

ADJ Pro Hazer

2 -DMX universes (5 pin cables from FOH)

1 - Guest DMX line on 3-pin

Fixtures are on fixed pipes

Fixture Window

MMH Patch

	Num	Note	Patch	Patch Type
Intimidator Spot 355Z IRC 15ch				
	1	US	2: 25	Fixture
	2	US	2: 66	Fixture
	3	US	2: 109	Fixture
	4	US	2: 153	Fixture
Intimidator Spot 475Z 16ch				
	401	GROUND	2: 168	Fixture
	402	GROUND	2: 184	Fixture
Rogue R1X Spot 19ch				
	501	GROUND	2: 220	Fixture
	502	GROUND	2: 239	Fixture
Scorpion Dual RGB				
	301	FOH	1: 25	Fixture
	302	FOH	1: 35	Fixture
	303	US	2: 200	Fixture
	304	US	2: 210	Fixture
SlimPar Pro VW 3ch				
	101	WASH	1: 1	Fixture
	102	BLINDER	1: 4	Fixture
	103	WASH	1: 7	Fixture
	104	WASH	1: 10	Fixture
	105	WASH	1: 13	Fixture
	106	WASH	1: 16	Fixture
	107	BLINDER	1: 19	Fixture
	108	WASH	1: 22	Fixture
VectorLED 712QB 13ch				
	201	US	2: 40	Fixture
	202	US	2: 53	Fixture
	203	US	2: 81	Fixture
	204	US	2: 95	Fixture
	205	US	2: 125	Fixture
	206	US	2: 139	Fixture
	207	FOH	1: 170	Fixture
	208	FOH	1: 183	Fixture
Entour Venue 1ch				
	601	GROUND	2: 1	Fixture

Universe 1: FOH Fixtures

Universe 2: US & Floor Fixtures

Stage

Uneven hexagonal shaped stage

22'3" wide at back wall

20'9" deep

26'7" wide at front

6'9" from front lip to angled in section

11'8" angled in section to back corner

12'7" stage to ceiling in back corners 14'4" stage to ceiling in middle (peaked roof)

4'6" from floor to deck

10'10" from floor to PA hang

Infrastructure

2 dressing rooms backstage with private toilets and showers

Ramp to stage

3 position clearcom system

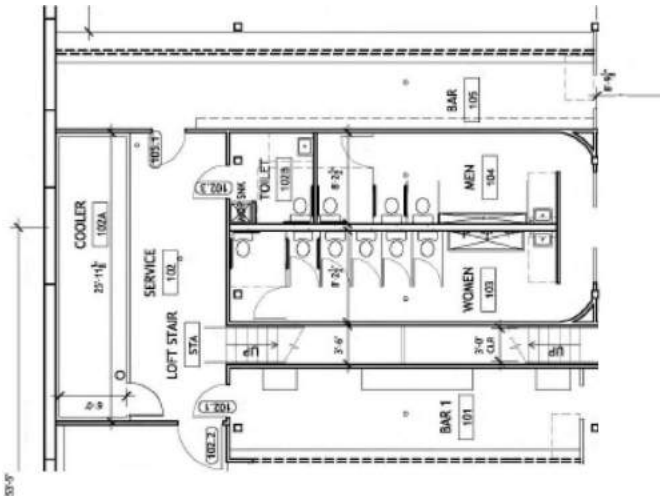
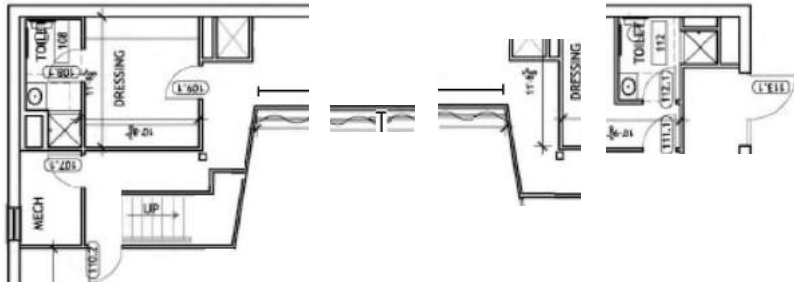
Production Manager

Michael Weiss

(916) 272-6875

michael@manchestermusichall.com

Merchandise



LOBBY LINE AT BUILDING ENTRANCE

(106.1)

(106.2)



Manchester Street

